

University of Edinburgh, Main Library, George Square, Edinburgh EH8 9LJ
Revision 14-8-19

Single Infeed AMH Survey Notes

The single infeed AMH is installed with the infeed unit inserted into a wall which is cladded with large stone tiles, probably granite. The interior opening in the wall has a steel frame fitted which the other two AMH infeed units do not have. Upon closer examination of old 3M AMH drawings, we found that the drawing suggested that there was a support fitted in the wall to support the exterior stone cladding.



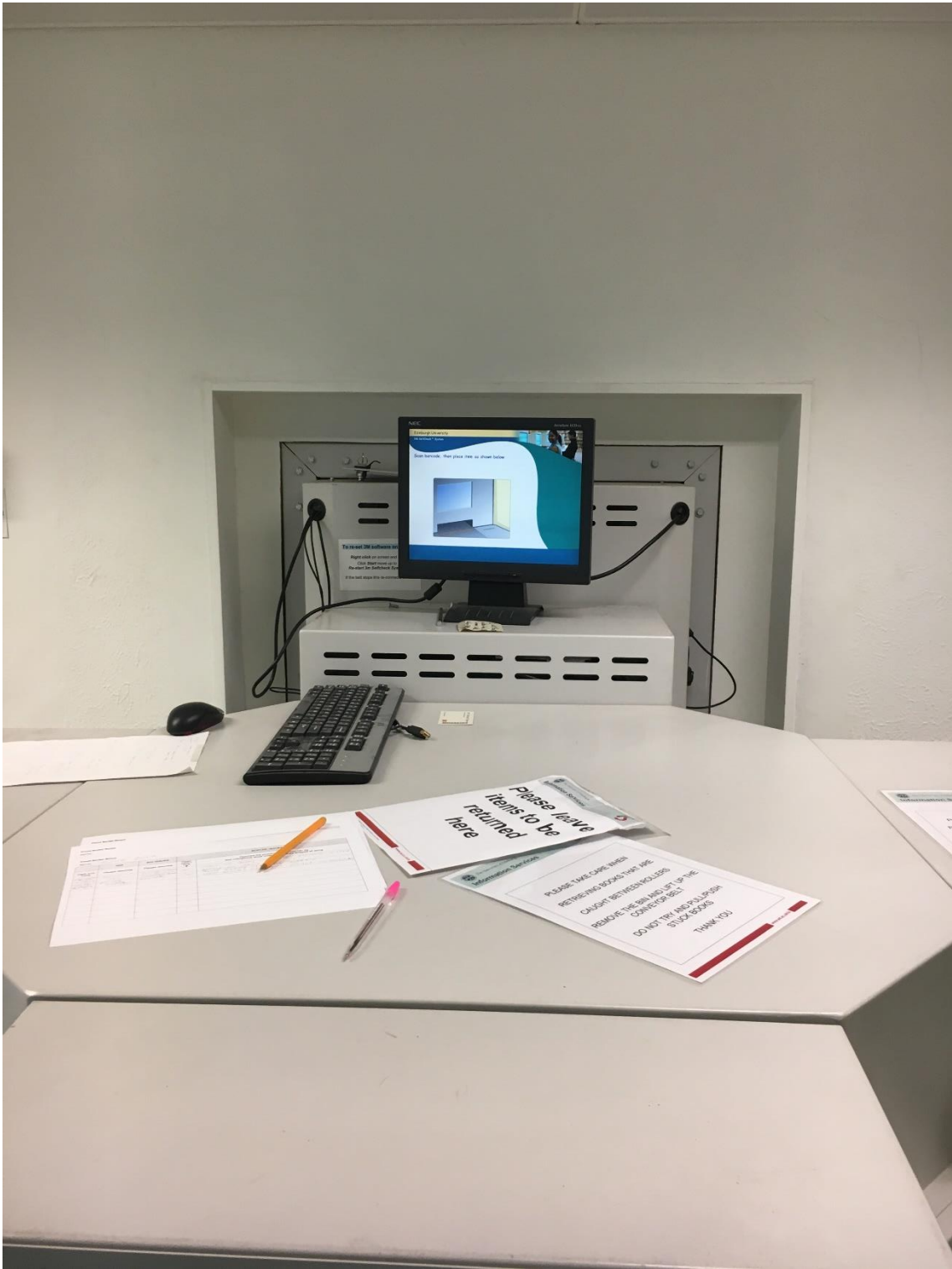
Steel frame that surrounds the infeed unit in the wall.



The steel frame will need to be removed to accommodate the new AMH infeed unit. What is unclear is the purpose of the steel frame in this installation. Further exploratory work is required prior to the installation of the new AMH to see what purpose of the steel frame is.

The height of the new unit means that the steel frame will need to be removed and replaced if required with another steel frame depending on the purpose of the current steel frame.

The opening in the wall will need to be cut to accommodate the new infeed unit which is higher than the current unit.



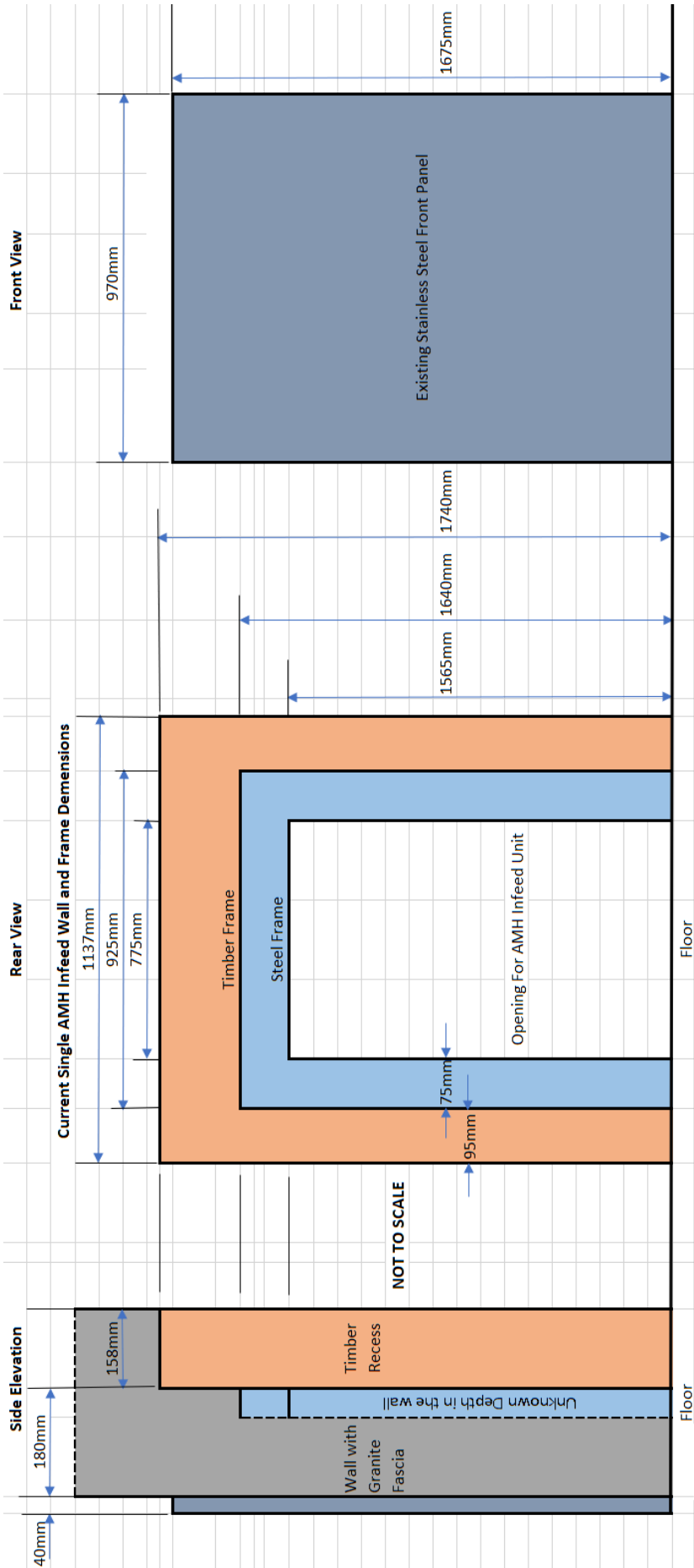
Dimensions of the current existing installation –

The granite tiles can be seen from the side of the exterior stainless-steel infeed fascia. The opening in the wall of the granite is cut at a height of 1620mm when measured from the floor.



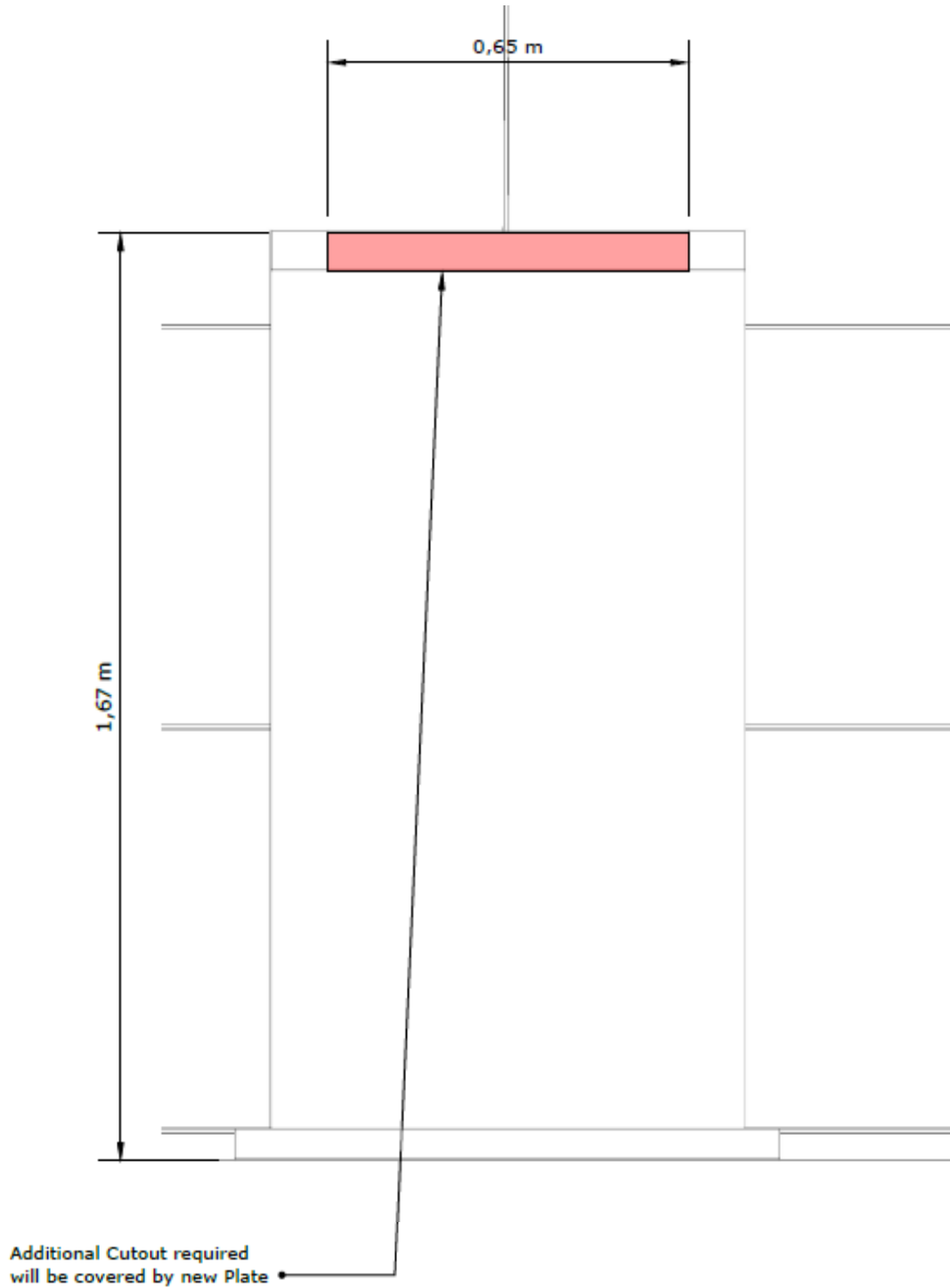
The existing cut- out in the granite can be seen from the side between the fascia and the wall.

The current interior frame and wall measurements are as follows –

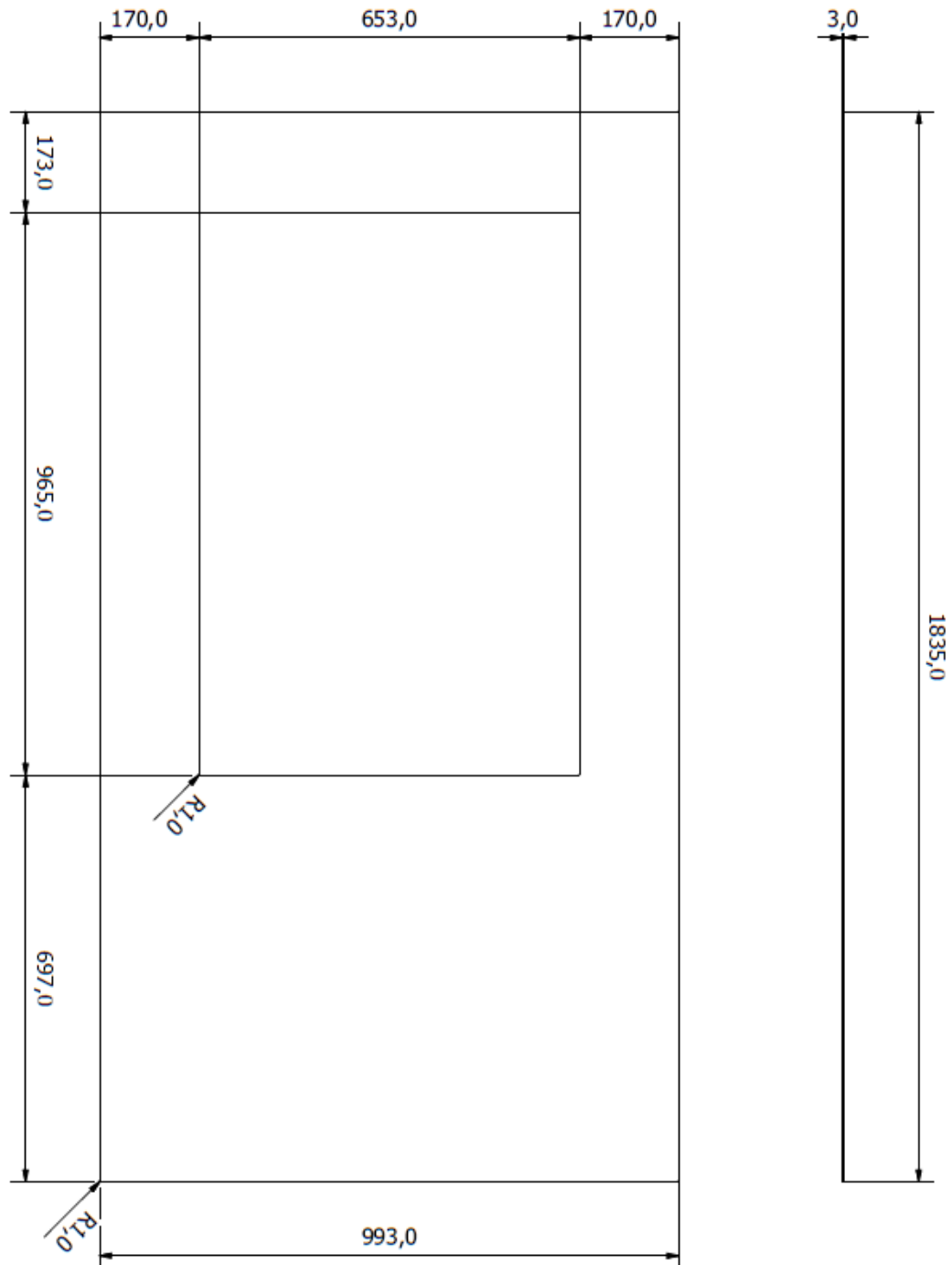


New AMH Installation – Additional Cut-out Work Required.

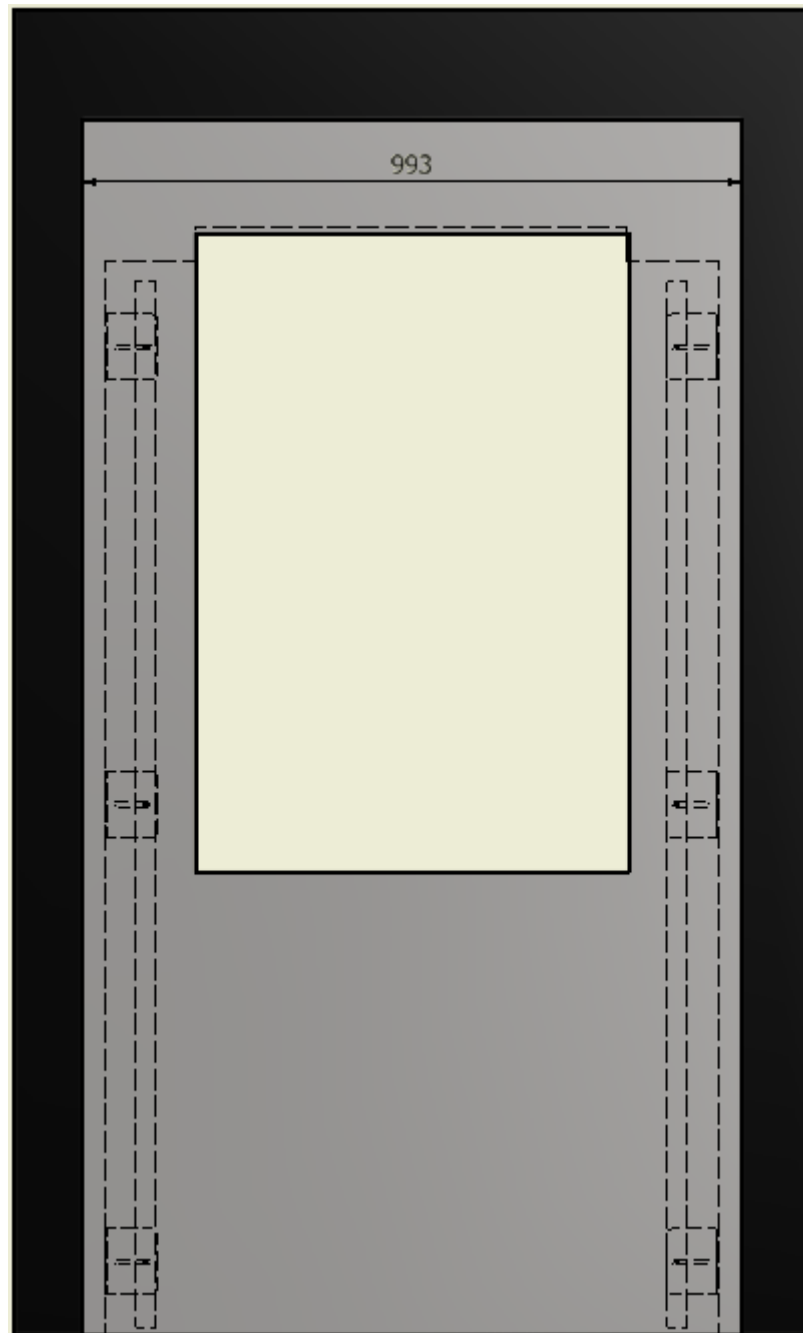
The new AMH will require pre works to enlarge the opening in the wall to accommodate the new infeed unit as follows. The measurement of 1.67m should be taken from the floor as the reference point and not from any other existing point or equipment, this will ensure that the height is accurate. The 0.65m cut-out width should be centred to the existing opening as shown below.



The new stainless-steel front panel will fit to the front of the new AMH infeed and a sleeve will insert through the cut-out and into the front panel over the infeed unit giving positioning flexibility and an attractive finish between the two items.



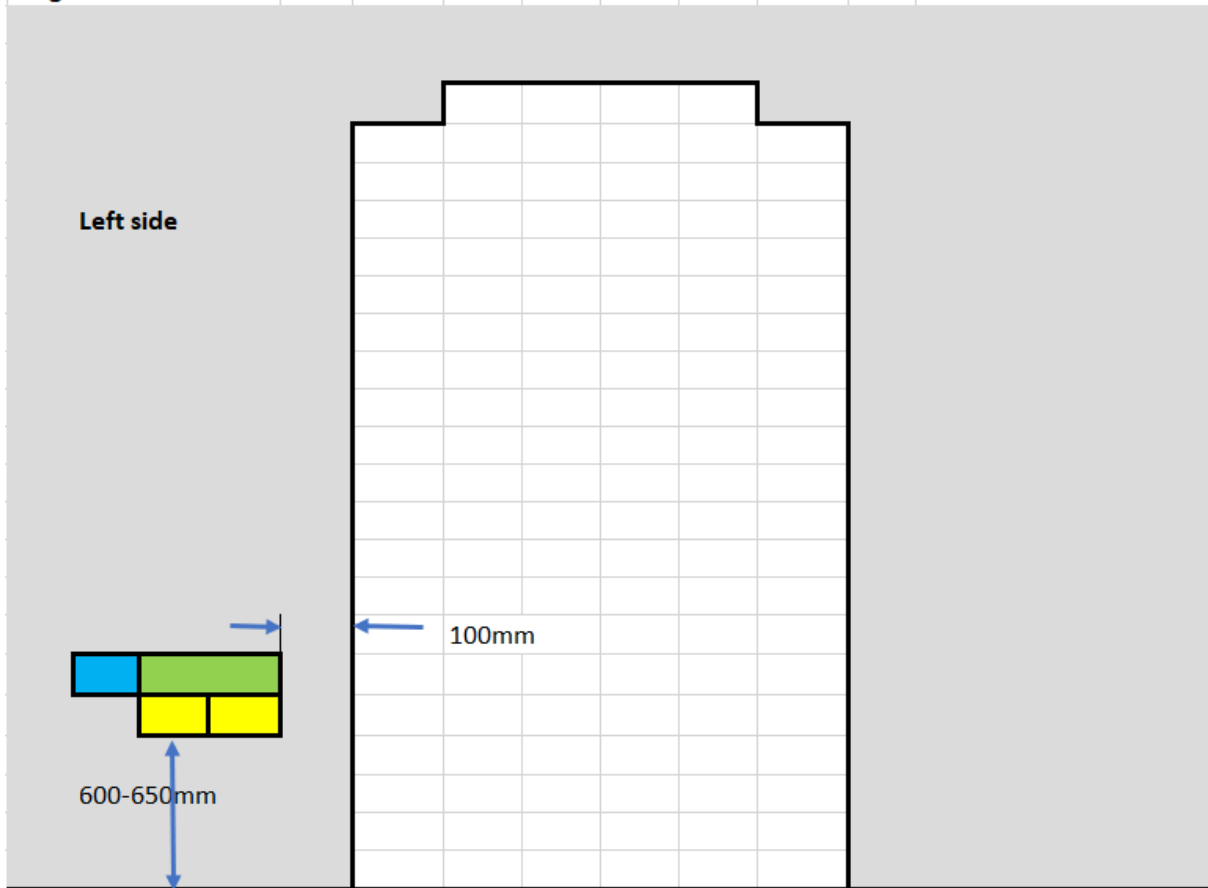
Mounting brackets will be used to mount and secure the stainless-steel front plate to the inside wall edges of the opening in the wall. The bracket positioning can be seen on the drawing below.






Any questions please ask.

Power and Data Points

Single In Feed AMH



KEY

-  Single Network Access Point.
-  Twin 13A standard mains plug outlets
-  Two Mains Switched 13A Fused Spurs.